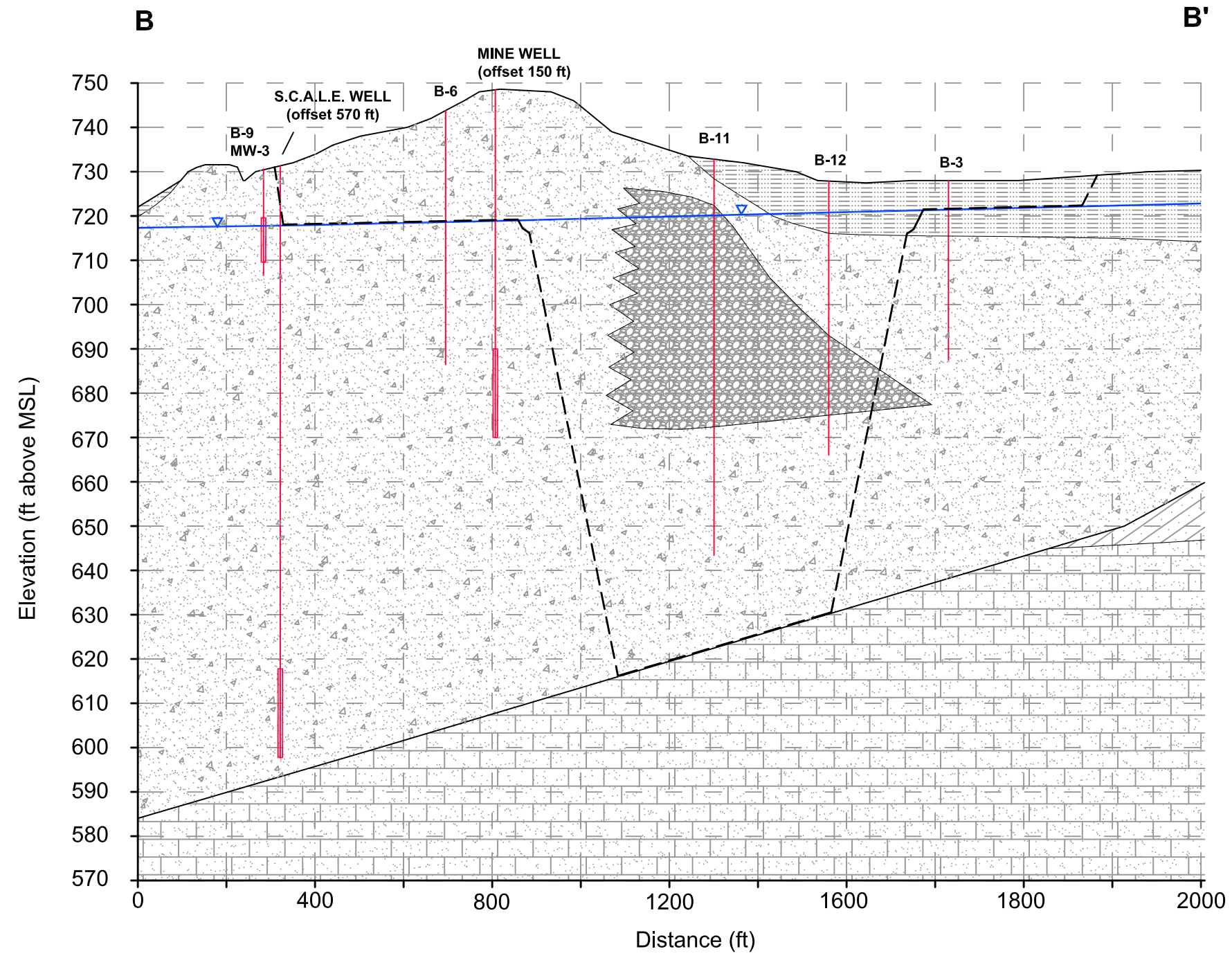






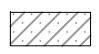



P:\Projects\HEN\HEN0901_Keefe.dwg\GW\Xsection A to A'.dwg, 12/30/2010 10:02:23 AM



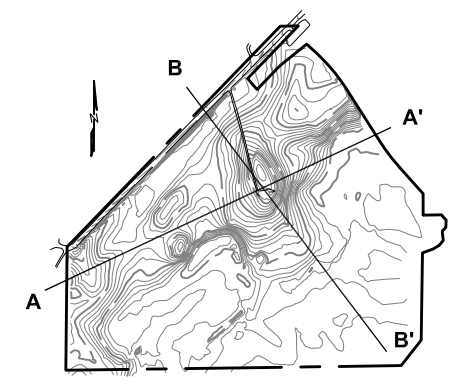
LEGEND

-  SCREENED INTERVAL
-  STATIC WATER ELEVATION (8-26-09)
-  PROPOSED MINE EXCAVATION DEPTH
-  UNCONSOLIDATED SILT AND CLAY;
FLOODPLAIN ALLUVIUM
-  UNCONSOLIDATED SAND & GRAVEL
-  FINE TO COARSE GRAVEL
-  ST. LAWRENCE FORMATION;
FINE SANDSTONE/SILTSTONE
-  FRANCONIA FORMATION;
SANDSTONE/SILTSTONE/SHALE

NOTES:

- 1) VERTICAL EXAGGERATION = 10X
- 2) BORING LOCATIONS OFFSET 20 TO 130 FEET FROM SECTION LINE
- 3) BEDROCK SURFACE ELEVATION OBTAINED FROM SCOTT COUNTY GEOLOGIC ATLAS

CROSS-SECTION LOCATIONS



McCain and Associates, Inc.
 2718 Gateway Avenue
 Bismarck, ND 58503
 ph 701-255-1475
 fx 701-255-1477

FIGURE 14

GEOLOGIC CROSS-SECTION B-B'

JORDAN AGGREGATES PROPOSED SAND AND GRAVEL MINE
 SAND CREEK TOWNSHIP, SCOTT COUNTY, MN